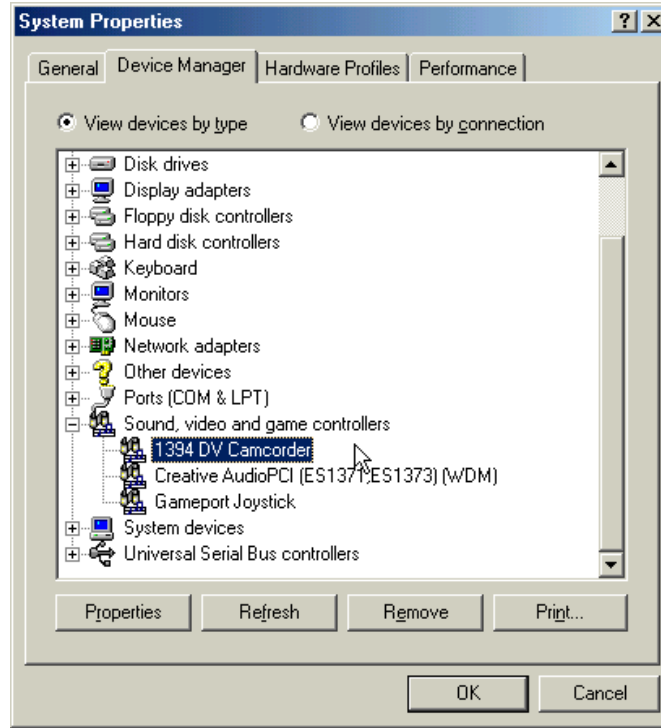

WINDOWS ME

Connect and turn your camcorder on.

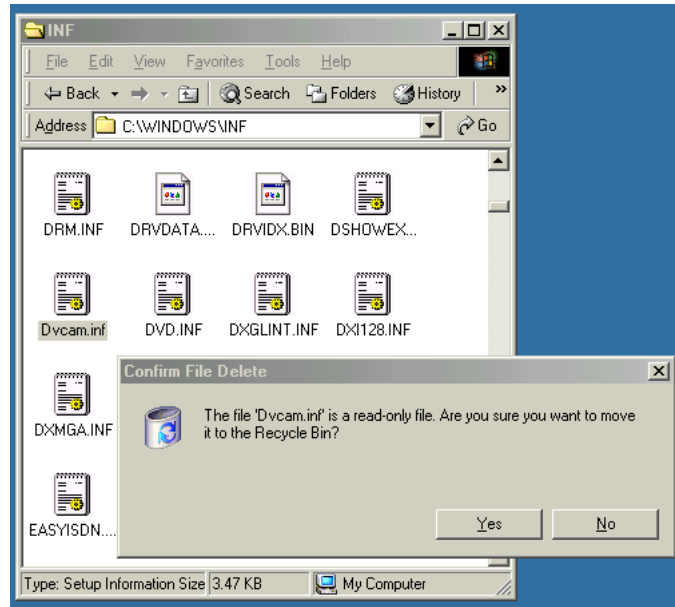
Check that you have the TI driver installed. To do this, right click on the "My Computer" icon on your desktop. Select Properties and you should see a dialog similar to that shown below.



Click on the device manager tab and look for "1394 DV Camcorder" listed under the Sound, video and game controllers.

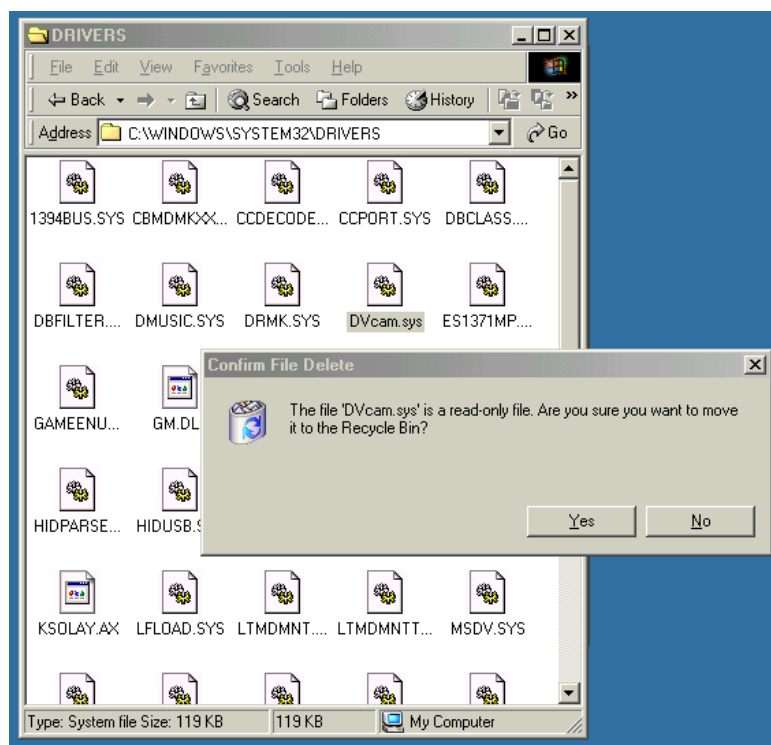
Turn your camcorder off (this list may now refresh).

Open the Windows folder in Explorer. Find the Inf folder and open this. Find the file called DVcam.inf



Delete this file. You must delete this file – renaming it is not sufficient, Windows may still find the driver.

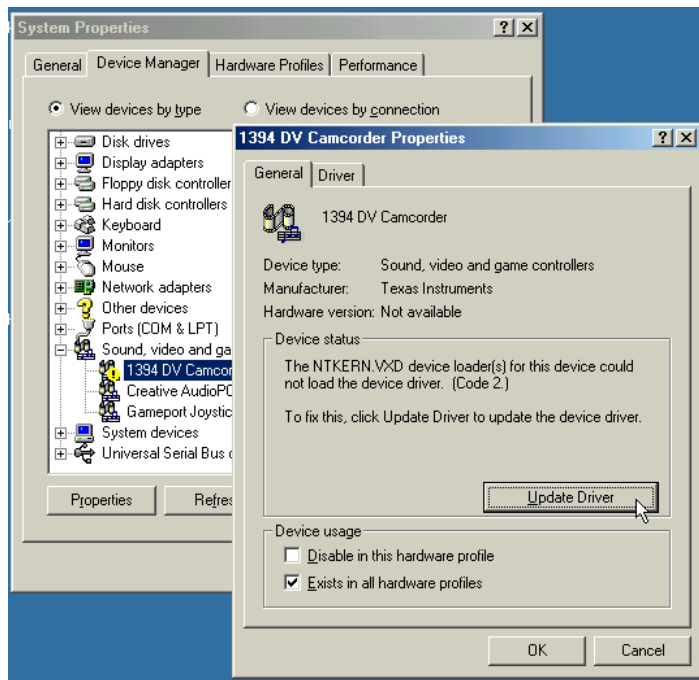
Now open the Windows/System32/drivers folder. Find the DVcam.sys file.



Delete this file. You must delete this file – renaming it is not sufficient, Windows may still find the driver.

Connect and turn on your camcorder. Restart your computer.

When the computer has rebooted, open the device manager again. It should show the 1394 DV Camcorder to be present, but not working.

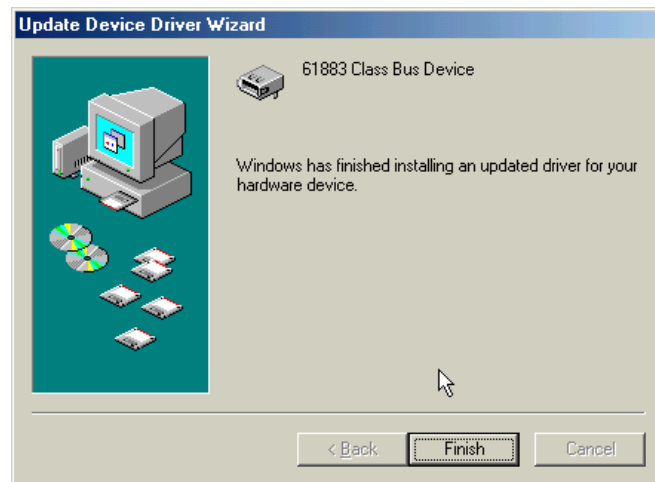


Select the 1394 DV Camcorder driver and click Properties in the device manager – this will open another dialog. Click Update Driver.

Select Automatic search for driver.



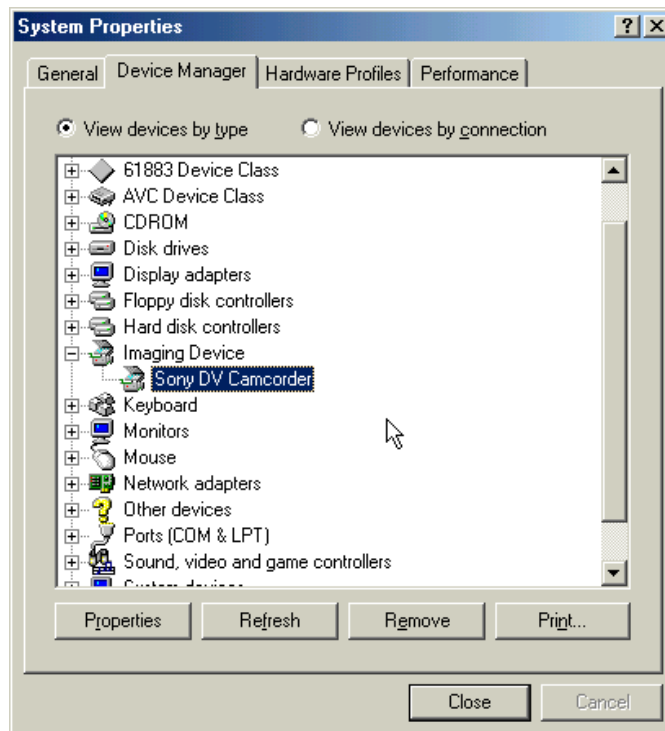
Click Next. The computer will find a new device. Windows will install the new device (or devices).



Now click Finish to close the wizard.

Restart if asked.

To check that the device has installed correctly. In Device Manager you will now see a new entry under the Imaging Devices section.



The Microsoft camcorder driver has now been successfully installed.